

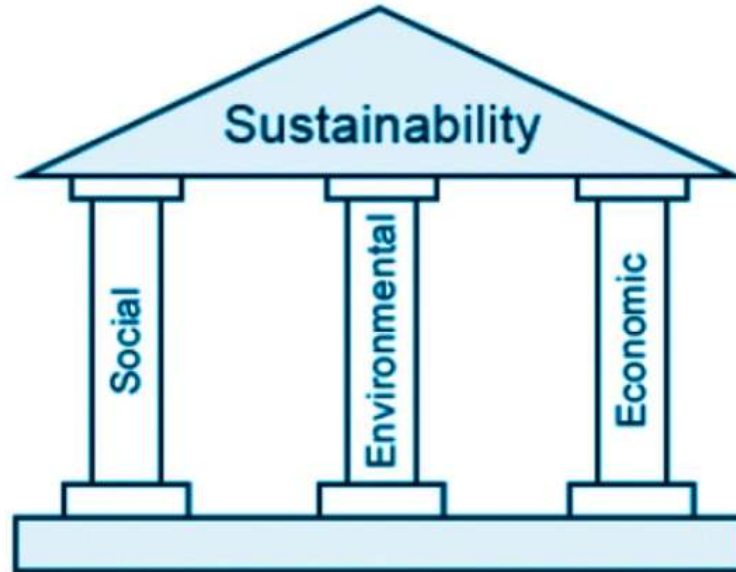
The wider sustainability and legacy of the SUMP tool

Sarah Fish

Cyclical process?

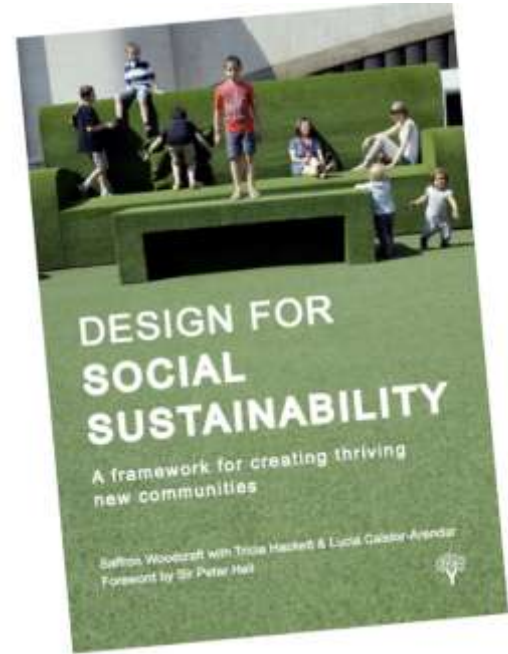


Pillars of Sustainability



Social Sustainability

- Creation of thriving new communities
- Work published by the Young Foundation
- Creation of a more equal and just society



A Framework for Social Sustainability

“It is difficult to design a space that will not attract people. What is remarkable is how often this has been accomplished.”

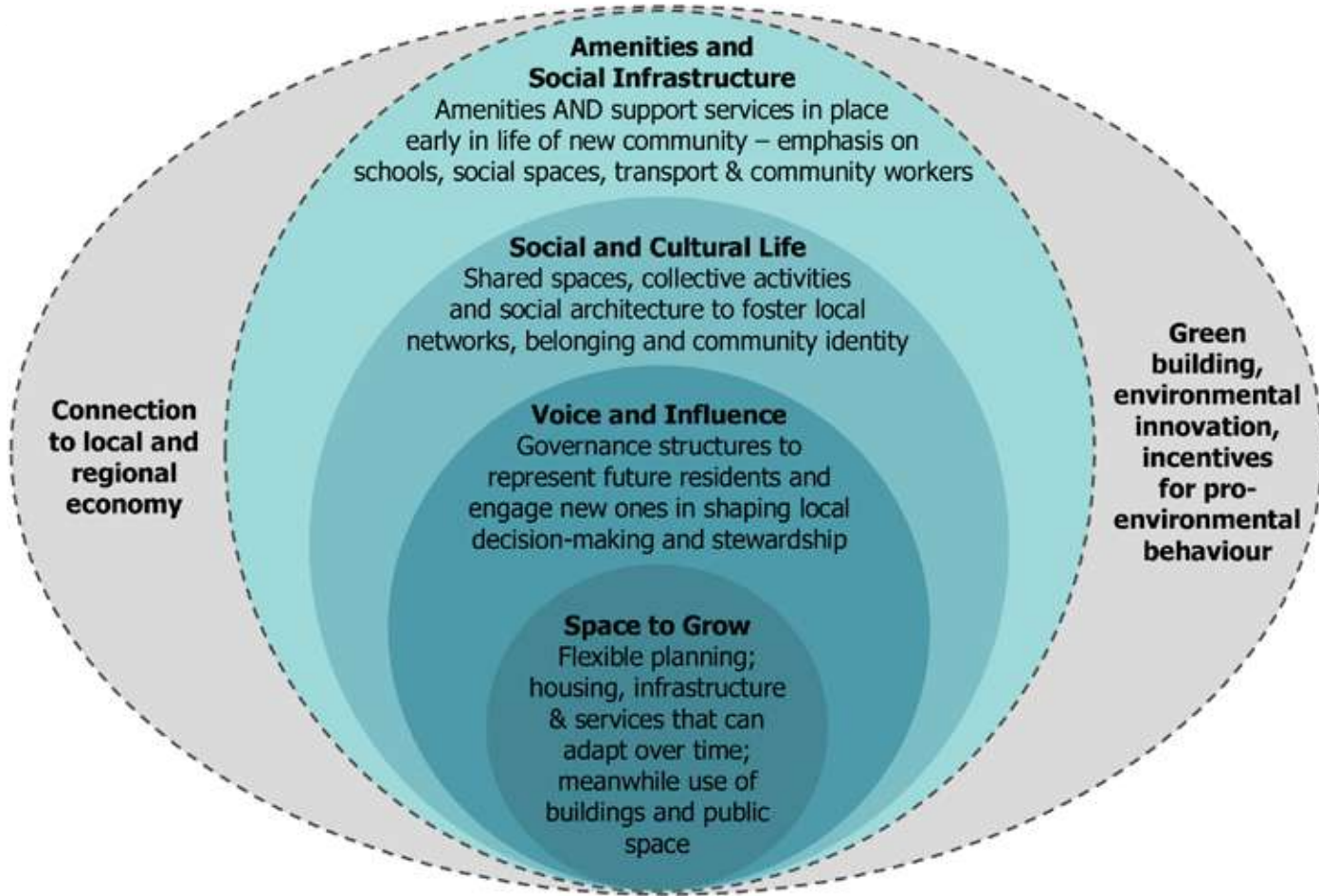
The Social Life of Public Spaces, William H. Whyte (1980)



ATKINS

New Town Blues

The phenomenon of the 'new town blues' - a loose grouping of mental health vulnerabilities experienced by New Town residents - suggesting a strong link between mental ill health and lack of social ties in a new environment



Green building, environmental innovation, incentives for pro-environmental behaviour



Building Blocks.....



Space to Grow

- Flexible infrastructure and master planning
- Physical and imagined space

Voice and Influence

- Creative community engagement
- Community advocates
- Participatory decision making
- Community driven stewardship
- Single issue lobby groups



Social and Cultural Life

- Neighbourhood networks
- Local identities
- Community groups and information
- Collective services
- Support for social interaction

Milton Keynes

Investment model that defines and costs the provision of social infrastructure at £700 per dwelling to provide:

‘activities, resources and support that strengthen the skills, abilities and confidence of people and community groups to take effective action and leading roles in the development of their communities.’

Amenities and Infrastructure

- Safe places
- Community assets
- Collective services
- Support for social interaction
- Infrastructure

*“You can’t have a totally structured place
and then just expect people to fit in...”*

Thank you

If you'd like to find out more visit:
www.atkinsglobal.com or

sarah.fish@atkinsglobal.com 0121 483 5699

@sarahfish19

© Atkins Limited except where stated otherwise.

The Atkins logo, 'Carbon Critical Design' and the strapline 'Plan Design Enable' are trademarks of Atkins Limited.